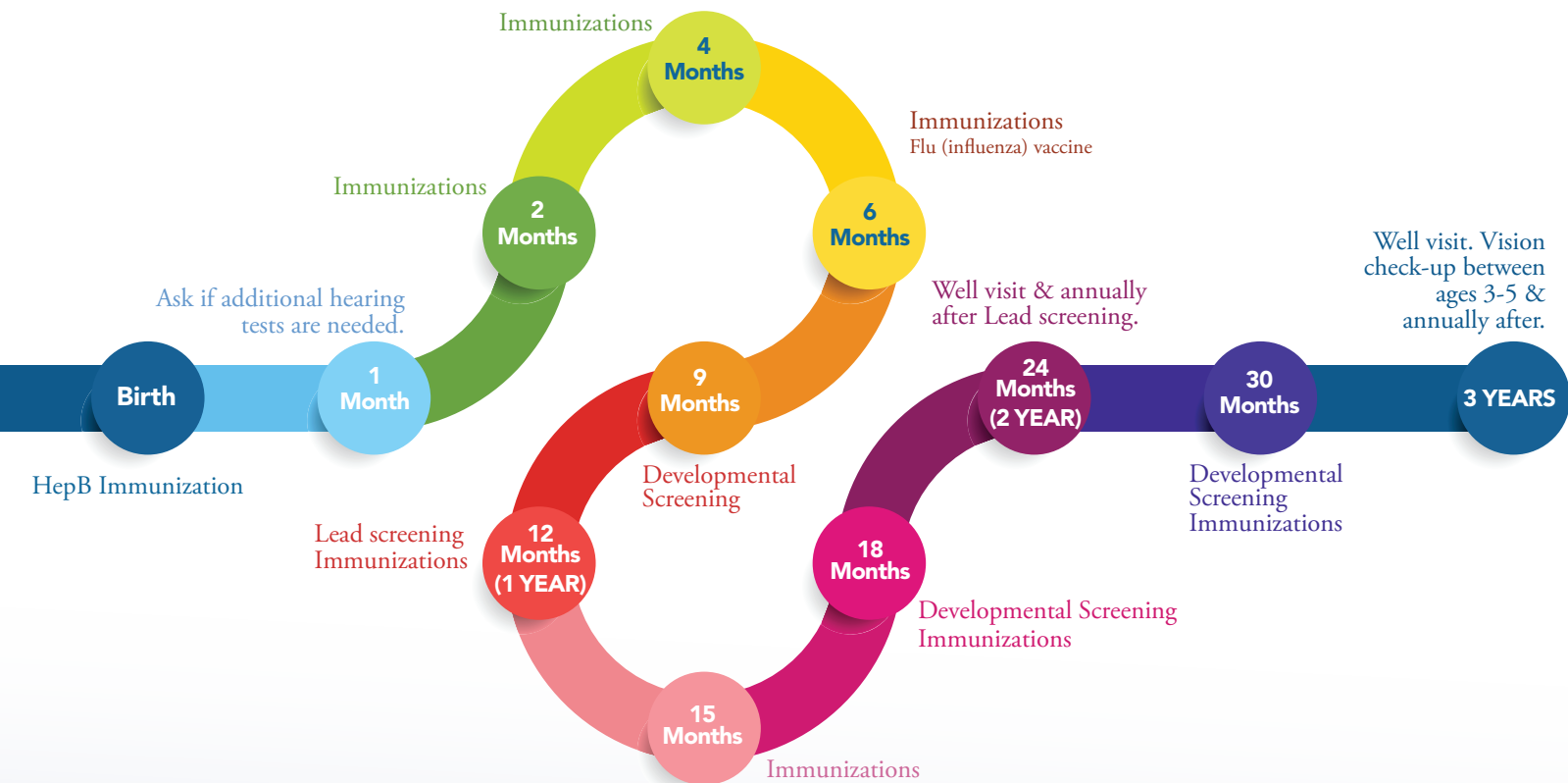


# Well-Child Check-Ups

## Birth to Three Years | Well Visit and Immunization Road Map



Vaccine	Birth	1 month	2 months	4 months	6 months	12 months	15 months	18 months	19-23 months	2-3 years
<b>RSV (Respiratory syncytial virus)</b>	1 dose depending on maternal RSV vaccination status					1 dose (8 through 19 months)				
<b>HepB (Hepatitis B)</b>	1 dose	1 dose			1 dose					
<b>RV (Rotavirus)</b>			1 dose	1 dose	1 dose					
<b>DTap (Tetanus, Diphtheria, Pertussis)</b>			1 dose	1 dose	1 dose		1 dose			
<b>Hib (Haemophilus Influenzae Type B)</b>			1 dose	1 dose	1 dose	1 dose				
<b>PCV (Pneumococcal)</b>			1 dose	1 dose	1 dose	1 dose				
<b>IPV (Polio)</b>			1 dose	1 dose	1 dose					
<b>Flu (Influenza)</b>						2 doses in first year, then 1 dose annually				
<b>MMR (Measles, Mumps, Rubella)</b>						1 dose				
<b>Varicella (Chickenpox)</b>						1 dose				
<b>HepA (Hepatitis A)</b>						2 doses (between 12 and 24 months)				
<b>Covid-19</b>					As recommended by age group					